



## Swansea Fish Photo Shoot

### Saturday 15<sup>th</sup> July 2017



The first Swansea Fish Photo Shoot, organised by the Combined Hunter Underwater Group (CHUG), was run on 15<sup>th</sup> July 2017. Conditions were perfect for fish photography with excellent visibility and light currents.

#### **Thanks to the 10 participants who sent in photos:**

Ash Smith, Margo Smith, Cath Shorthouse, Meryl Larkin, Nicola Davis, Tom Davis, Kate Tinson, Ian Medcalf, Gina Mascord, Terry Roche

For the event teams sent in photos of 10 different fish species, and scored 1 pt for each clear photo, 1 pt for each correctly identified species, and 1 pt for each species no other team submitted (max. 30 pts)

**Margo Smith and Gina Mascord were the top scoring team with a close to perfect score of 27 pts!**

The most unusual fish was a Lilac-tipped Basslet (*Pseudanthias rubrizonatus*) found by Ash Smith. This is a tropical species more commonly found on coral reefs, with Ash the only photographer to send in a picture of this species.

The best fish photo was a portrait of the Yellow-back Puller (*Chromis nitida*) by Kate Tinson. This excellent photo would look great in a book on tropical marine fishes.



Lilac-tipped Basslet (*Pseudanthias rubrizonatus*) by Ash Smith



Yellow-back Puller (*Chromis nitida*) by Kate Tinson

Between the teams photos of 42 different species were submitted, with many other species also seen on the day. The album below shows photos for each species submitted. Species marked with an \* are potential range extension species of interest to Redmap which can be logged at <http://www.redmap.org.au/>

Swansea Fish Photo Shoot - Species Album - 2017



Banded toadfish  
(*Torquigener pleurogramma*)



Bartail/freckled goatfish  
(*Upeneus tragula*)



Bengal sergeant  
(*Abudefduf bengalensis*)



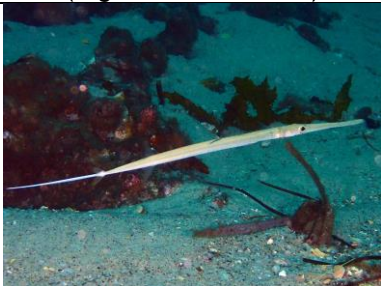
Black Rabbitfish, Happy Moments  
(*Siganus fuscescens*)



Black rockcod  
(*Epinephelus daemeli*)



Blotched Hawkfish  
(*Cirrhitichthys aprinus*)



Bluespotted cornetfish  
(*Fistularia commersonii*)



Bridled leatherjacket  
(*Acanthaluteres spilomelanurus*)



Violetline parrotfish  
(*Scarus globiceps*)



Cleaner wrasse  
(*Labroides dimidiatus*)



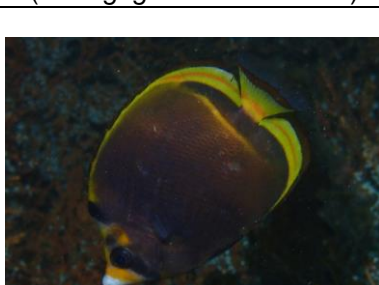
Cockerel wrasse  
(*Pteragogus enneacanthus*)



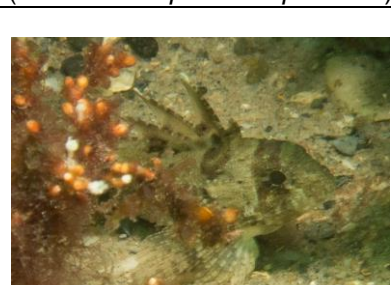
Conspicuous Angelfish  
(*Chaetodontoplus conspicillatus*)



Diamond-scale goatfish  
(*Parupeneus ciliatus*)  
**\*Redmap species**



Dusky butterflyfish  
(*Chaetodon flavirostris*)



Eastern fortescue  
(*Centropogon australis*)



Finespot Wrasse  
(*Cirrhilabrus punctatus*)



Girdled parma  
(*Parma unifasciata*)



Green moray  
(*Gymnothorax prasinus*)



Gunther's butterflyfish  
(*Chaetodon guentheri*)



Horned Blenny  
(*Parablennius intermedius*)



Kelpfish  
(*Chironemus marmoratus*)



Lilac-tipped basslet  
(*Pseudanthias rubrizonatus*)



Luculentus wrasse  
(*Pseudolabrus luculentus*)



Malabar cod  
(*Epinephelus malabaricus*)



Moses' Snapper  
(*Lutjanus russellii*)



Old wife  
(*Enoplosus armatus*)



Painted stinkfish  
(*Eocallionymus papilio*)



Pale-barred coris  
(*Coris dorsomacula*)



Pencilled surgeonfish  
(*Acanthurus dussumieri*)



Pineapple fish  
(*Cleidopus gloriamaris*)

# Swansea Fish Photo Shoot - Species Album - 2017



Red morwong  
(*Cheilodactylus fuscus*)



Sawtail surgeonfish  
(*Prionurus microlepidotus*)  
**\*Redmap species**



Sawtooth Pipefish  
(*Maroubra perserrata*)



Schooling bannerfish  
(*Heniochus diphreutes*)



Snapper  
(*Pagrus auratus*)



Southern Grubfish  
(*Parapercis australis*)



Threadfin butterflyfish  
(*Chaetodon auriga*)  
**\*Redmap species**



Three-bar porcupinefish  
(*Dicotylichthys punctulatus*)



Three-ribbon wrasse  
(*Stethojulis strigiventer*)



Yellow sabretooth blenny  
(*Petroscirtes fallax*)



Yellow-back puller  
(*Chromis nitida*)  
**\*Redmap species**



Yellow-finned leatherjacket  
(*Meuschenia trachylepis*)